

Suppliers' Information Note

For The Openreach Network

External NTE for the PSTN Single Analogue Line Interface Service & Interface Description

Each SIN is the copyright of British Telecommunications plc. Reproduction of the SIN is permitted only in its entirety, to disseminate information on the BT Network within your organisation. You must not edit or amend any SIN or reproduce extracts. You must not remove BT trade marks, notices, headings or copyright markings.

This document does not form a part of any contract with BT customers or suppliers.

Users of this document should not rely solely on the information in this document, but should carry out their own tests to satisfy themselves that terminal equipment will work with the BT network.

BT reserves the right to amend or replace any or all of the information in this document.

BT shall have no liability in contract, tort or otherwise for any loss or damage, howsoever arising from use of, or reliance upon, the information in this document by any person.

Due to technological limitations a very small percentage of customer interfaces may not comply with some of the individual characteristics which may be defined in this document.

Publication of this Suppliers' Information Note does not give or imply any licence to any intellectual property rights belonging to British Telecommunications plc or others. It is your sole responsibility to obtain any licences, permissions or consents which may be necessary if you choose to act on the information supplied in the SIN.

Those BT services marked TM indicates it is a trade mark of British Telecommunications plc.

This SIN is available in Portable Document Format (pdf) from:
<https://www.openreach.co.uk/orpg/home/helpandsupport/sins/sins.do>

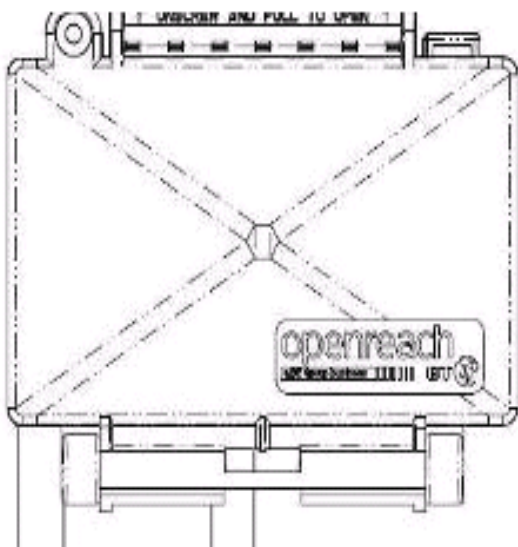
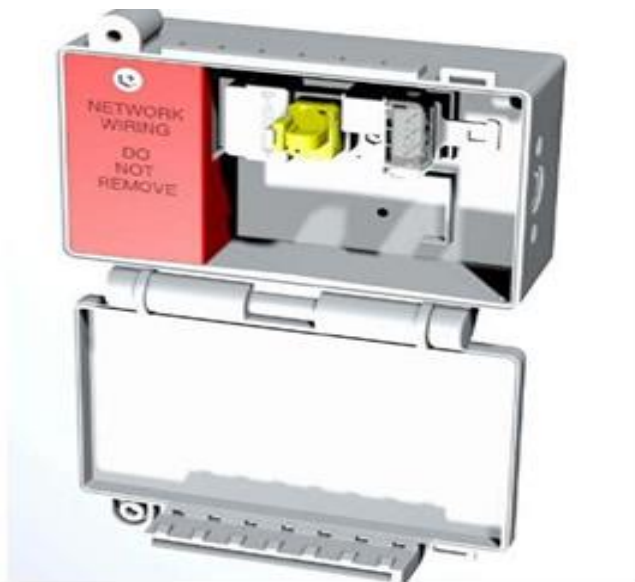
Enquiries relating to this document should be directed to: orsinsfa@openreach.co.uk

CONTENTS

1.	INTRODUCTION.....	5
2.	SERVICE OUTLINE	5
2.1	GENERAL	5
2.2	SERVICE AVAILABILITY	5
3.	CEASING USAGE.....	6
4.	REFERENCES.....	6
5.	ABBREVIATIONS	6
6.	HISTORY	6

FIGURES

FIGURE 1.	THE EXTERNAL NTE	
-----------	------------------------	--



1. Introduction

Supplier's Information Note (SIN) 470 provides technical information on the External NTEs (Network Terminating Equipment) for the PSTN Single Analogue Line Interface as a standard engineering practice for new residential premises under certain circumstances.

It should be noted that the information contained within this SIN might be subject to change. Please check with the <https://www.openreach.co.uk/orpg/home/helpandsupport/sins/sins.do> site to ensure you have the latest version of this document.

Further information can be obtained by contacting your Openreach Commercial Business Manager.

2. Service Outline

2.1 General

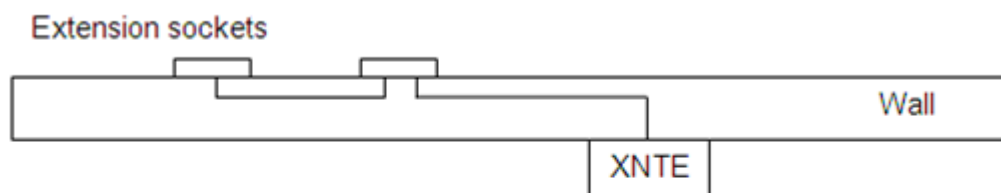
Openreach does not install External NTE's anymore even at residential new build developments to terminate the copper pair. This SIN provides details relevant to CPs regarding External NTEs.

BT reserves the right at its absolute discretion to elect whether or not to install an External NTE.

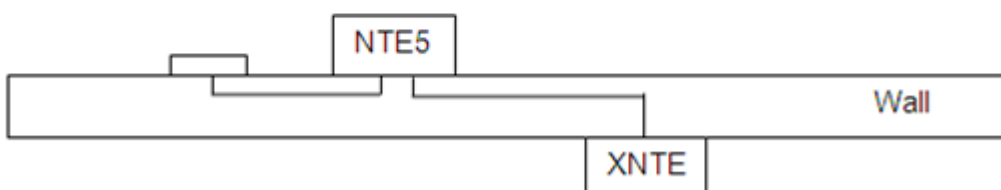
2.2 Service Availability

The External NTE (XNTE) was used on NewSites developments since 2007. Due to being incompatible with FTTC and FTTP it is now withdrawn however some current XNTEs may remain in situ until faulty or visited by an engineer. When visited the internal NTE5C must be fitted instead by converting the first extension socket served after the XNTE which now needs to be re-wired as the new "Mastersocket" using an NTE5C. This is easily done by bypassing crimping through within the XNTE and terminating the cable from the XNTE to the NTE5 backplate and terminating all further extensions to the NTE5 frontplate.

Before



After



3. Ceasing usage

From November 2011 the External NTE will no longer be provided at NewSites. Housing developers will instead install an internal NTE5. All existing External NTEs will remain in place until faulty or removed if an End User changes to an incompatible service.

4. References

Suppliers' Information Note:

[1]	SIN 351	BT Public Switched Telephone Network (PSTN): Technical Characteristics of the Single Analogue Line Interface
-----	---------	--

5. Abbreviations

CP	Communications Provider
DSL	Digital Subscriber Line
IC	Integrated Circuit
IDC	Insulation Displacement Connection
NTE	Network Terminal Equipment.
NTP	Network Terminating Point
PSTN	Public Switched Telephone Network
SIN	Suppliers' Information Note (BT Publication)
SPIN	Service Provider Information Note (BT Publication)
STIN	Suppliers' Trial Information Note (BT Publication)

6. History

Issue	Date	Changes
STIN 1.0	13 November 2007	First published.
1.0	4 December 2008	References to trial removed from STIN and republished as SIN. Also minor editorials, but no material changes to technical specifications.
2.0	April 2012	Added new Section 5
2.1	April 2015	Change SINet site references from http://www.sinet.bt.com to http://www.btplc.com/sinet/
3.0	April 2018	Updated to remove installation detail as now withdrawn

3.1	May 2020	ChangeSINet site references from http://www.btplc.com/sinet/ to https://www.openreach.co.uk/orpg/home/helpandsupport/sins/sins.do
3.1	September 2021	Annual Review – no changes made – issue number therefore remains the same

-END-